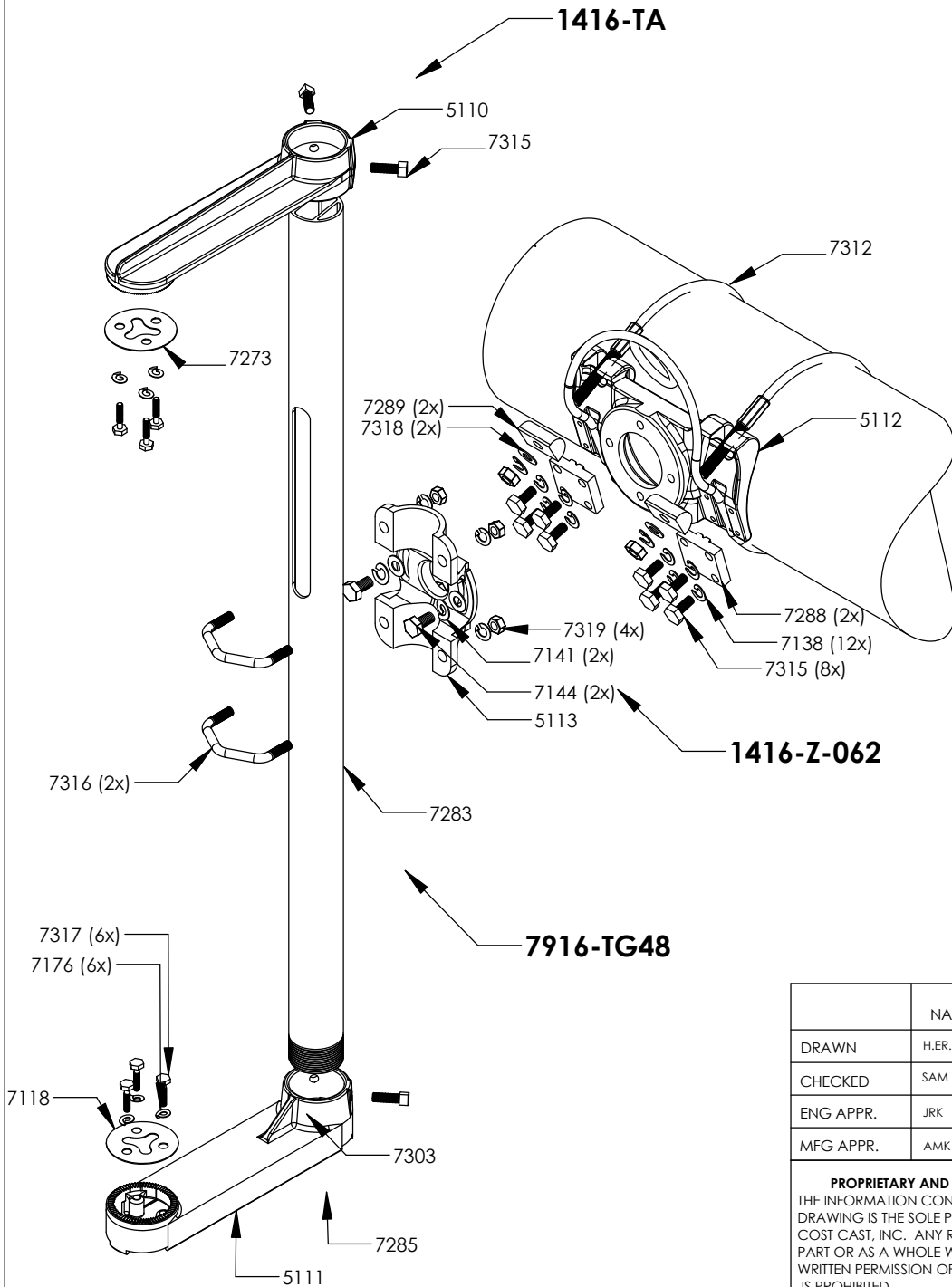


REVISIONS			
REV.	DESCRIPTION	DATE	APPROVED
A	INITIAL RELEASE	12/16/13	RJT
C	CABLE LENGTH	9/23/2016	AMK



ITEM NO.	PART DESCRIPTION	
<b>1416-SS-062</b>	<b>1416 Saddle &amp; Swivel Assembly, 62" Cable Double Swage, SS304</b>	1
5112	1416 Mast Arm Bracket Saddle, Al Alloy 535.0	1
5113	1416 Mast Arm Bracket Swivel, Al Alloy 535.0	1
7XXX	Aircraft Cable, XX" Long, Double 3/8" Swage, SS304	1
7315	5/16"-18 x 3/4" Cap Screw, SS304	8
7138	5/16" Washer, Lock, SS304	12
7288	Clamp, Cable, Four-Bolt, Extruded, Al,	2
7289	Wedge, Aluminum, Extruded, 1316/1346 & 1416/1446	2
7318	3/8" Washer, Fender, Flat, SS304	2
7316	V-Bolt: 5/16"-18, SS304	2
7319	5/16"-18, Hex Nut	4
7144	3/8"-16 x 1-1/4" Cap Screw, SS304	2
7141	3/8" Washer, Lock, SS304	2
7916-TG48	Aluminum Tube, 48" Long, Al Alloy 6061-T6	1
<b>1416-TA</b>	<b>1416 Mast Arm Signal, Tube Arm Brackets, 1,2,3,4, &amp; 5 In-Line Signal Section, SS 304</b>	1
5110	1416 Mast Arm Bracket Top Arm	1
5111	1416 Mast Arm Bracket Bottom Arm	1
7317	1/4"-20 x 1-1/2" Cap Screw, Hex Head, SS304	6
7176	1/4" Washer, Lock, SS304	6
7118	Washer, Tri-Stud, SS304	2
7315	5/16"-18 x 3/4" Cap Screw, SS304	4
7285	Bottom Arm Cover, Plastic	1

NAME		DATE	UNLESS OTHERWISE SPECIFIED:				
DRAWN	H.ER. B	11/12/12	DIMENSIONS ARE IN INCHES TOLERANCES: ANGULAR: MACH ± 1/32" TWO PLACE DECIMAL ± .03" THREE PLACE DECIMAL ± .010"				
CHECKED	SAM	11/18/12					
ENG APPR.	JRK	12/1/12					
MFG APPR.	AMK	12/3/12					
<b>PROPRIETARY AND CONFIDENTIAL</b> THE INFORMATION CONTAINED IN THIS DRAWING IS THE SOLE PROPERTY OF COST CAST, INC. ANY REPRODUCTION IN PART OR AS A WHOLE WITHOUT THE WRITTEN PERMISSION OF COST CAST, INC. IS PROHIBITED.			INTERPRET GEOMETRIC TOLERANCING PER:				
			MATERIAL			<b>COST CAST, INC</b>  <b>TITLE:</b> <b>1416-G-CXX-48</b>  Value-Brac, Mast-Arm Signal Hanger, 3-Section Signal, XX" Cable, Stainless Steel 304 Certified	
			FINISH				
DO NOT SCALE DRAWING			SIZE	DWG. NO.	REV		
			<b>A</b>	<b>13866</b>	<b>C</b>		
			SCALE: 1:16	WEIGHT:	SHEET 1 OF 1		