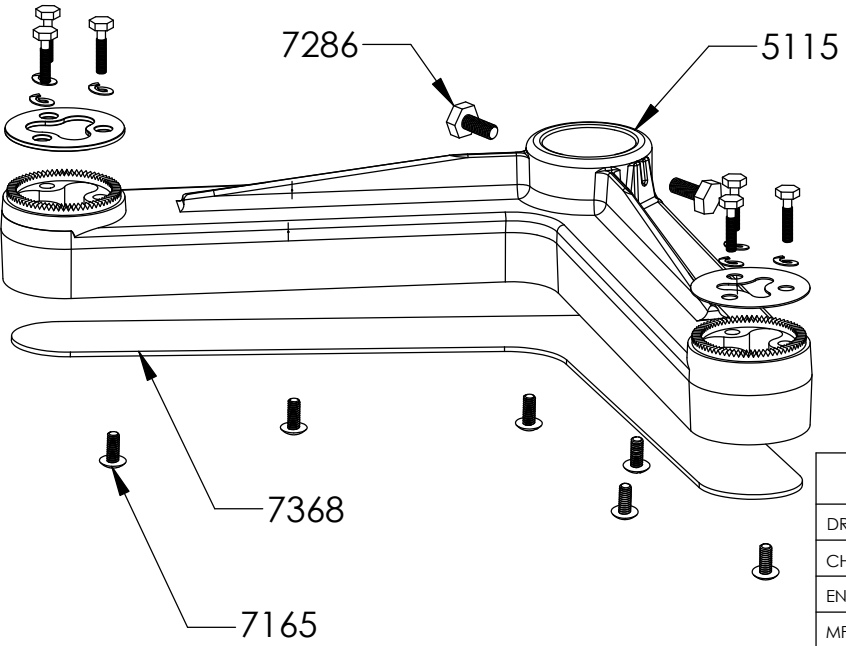
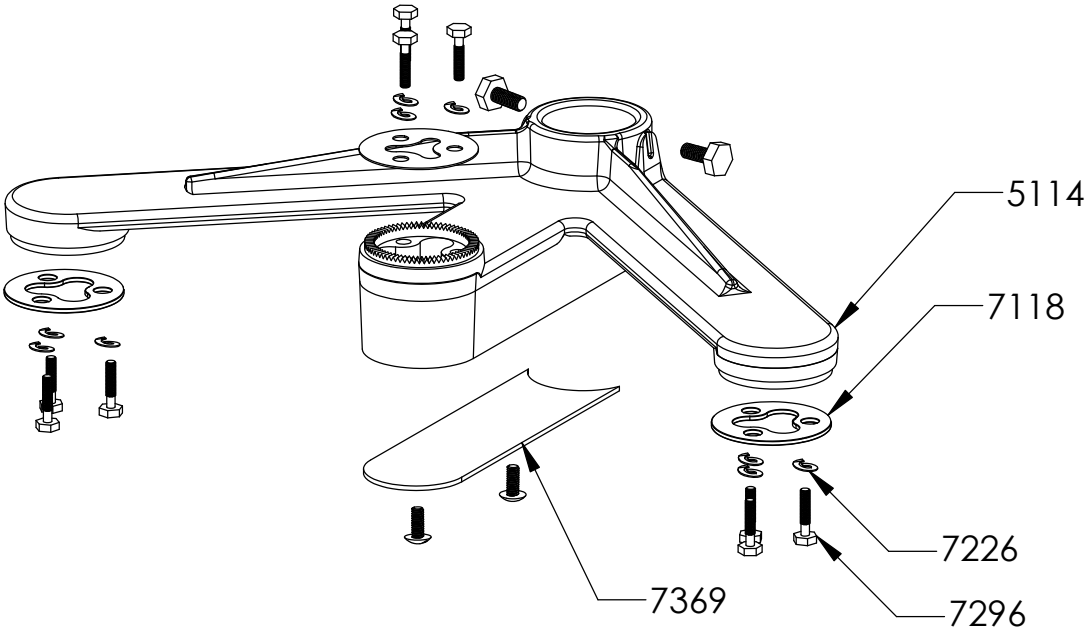


REVISIONS			
REV.	DESCRIPTION	DATE	APPROVED
A	INITIAL RELEASE	10/14/15	HRB



ITEM NO.	PART DESCRIPTION	
5114	F5 Cluster Foot Top, Al Alloy 319.0	1
7369	F5 Top Arm Cover, Plastic	
5115	F5 Cluster Foot Bottom, Al Alloy 535.0	1
7368	F5 Bottom Arm Cover, Plastic	1
7816-D	Hardware Kit for 1816 Tube	
7286	5/16"-18 x 3/4" Cap Screw SS304	4
7118	Tri-Stud Washer, .090" Thick, SS304	5
7273	Washer, Tri-Stud, Rubber	3
7296	1/4"-20 x 1-1/2" Cap Screw, SS304	15
7226	1/4" Washer Lock, SS304	15
7165	1/4"-20 x 5/8" Cap Screw, SS304	8

	NAME	DATE
DRAWN	AMK	7/3/15
CHECKED	GMK	7/7/15
ENG APPR.	JRK	7/9/15
MFG APPR.	HRB	7/9/15

PROPRIETARY AND CONFIDENTIAL
 THE INFORMATION CONTAINED IN THIS DRAWING IS THE SOLE PROPERTY OF COST CAST, INC. ANY REPRODUCTION IN PART OR AS A WHOLE WITHOUT THE WRITTEN PERMISSION OF COST CAST, INC. IS PROHIBITED.

UNLESS OTHERWISE SPECIFIED:
 DIMENSIONS ARE IN INCHES
 TOLERANCES:
 ANGULAR: MACH ± 1/32"
 TWO PLACE DECIMAL ± .03"
 THREE PLACE DECIMAL ± .010"

INTERPRET GEOMETRIC TOLERANCING PER:

MATERIAL
VARIOUS

FINISH
VARIOUS

DO NOT SCALE DRAWING

COST CAST, INC

TITLE:
1946-TACL
 Mast Arm Signal Arm Kit
 4 and 5-Section Cluster Signal Hanger

SIZE A	DWG. NO. 13837	REV A
------------------	--------------------------	-----------------

SCALE: 1:24 | WEIGHT: | SHEET 1 OF 1